

# BioMag<sup>®</sup> SelectaPure Human T cell Enrichment Systems

## Description

T cells are distinguished from other white blood cells by the presence of the T cell antigen receptor (TCR). Two types of TCR are routinely discussed, TCR-1 and TCR-2. TCR-1 is a disulfide-linked polypeptide containing  $\gamma$  and  $\delta$  chains, whereas TCR-2 consists of  $\alpha$  and  $\beta$  chains. Both of these receptors are associated with other polypeptides that make up the CD3 complex. Approximately 95% of T cells express TCR-2. The TCR-2 cells can be further subdivided into T helper CD4+ cells and T cytotoxic/suppressor CD8+ cells. The CD4+ cells recognize antigens in conjunction with MHC II class molecules, whereas CD8+ cells recognize antigens in conjunction with MHC class I molecules. CD3+/TCR-1+ cells that are CD4- and CD8- are known as intra epithelial lymphocytes that target surface epithelia. In interstitial mucosal epithelium, TCR-1+ cells may also express CD8 and it is thought that these cells may operate at the site of pathogen entry through the epithelia.

The CD3 antigen is expressed by thymocytes and mature T cells. It is also present in the cytoplasm of the early thymocytes and has been utilized as an early marker of T cell differentiation. The CD4 antigen is expressed on a subset of peripheral blood lymphocytes, the T "helper" lymphocytes, most thymocytes, and is frequently co-expressed with CD8. CD4 is also expressed on all monocytes, but at a lower density than on CD4+ T lymphocytes. CD4+ T lymphocytes are active in inducing and helping the synthesis of immunoglobulins by B cells. Autoimmune disorders have been shown to be associated with T cell subset abnormalities due to a loss of inducer cells or due to the presence of abnormal T cells. The CD8 molecule is found on the suppressor/cytotoxic T lymphocytes, a subset of human peripheral blood lymphocytes, and is widely used as a marker of this cell type. Certain NK cells may also express the CD8 antigen, but with low to medium density of expression. CD8 is also present on most thymocytes where it is frequently co-expressed with CD4, and on a subpopulation of bone marrow cells. Many autoimmune diseases have been associated with a decrease in CD8 positive suppressor T lymphocytes.

The BioMag SelectaPure Human T cell Enrichment Systems allow for the isolation of untouched CD3+, CD4+ and CD8+ T cells from human peripheral blood mononuclear cells. Based on BioMag superparamagnetic particles, the BioMag SelectaPure Human T cell Enrichment Systems target the removal of cells with a simple negative selection procedure that does not require the use of columns. The CD3+ system targets the removal of CD19, CD16, CD11b, CD56 and CD36 via antibodies attached to the BioMag particles, resulting in over 95% purity of the CD3+ cells in the lymphocyte fraction. Using the BioMag SelectaPure T cell CD4+ Enrichment System or the BioMag SelectaPure Human T cell CD8+ Enrichment System facilitates the enrichment of CD4+ T cells or CD8+ T cells.

Each BioMag SelectaPure Human T cell Enrichment System contains magnetic particles, which are approximately 1.5 $\mu$ m in size. The suspension is supplied in a phosphate buffered saline (pH 7.5) containing EDTA, 1.0% BSA and 0.1% sodium azide.

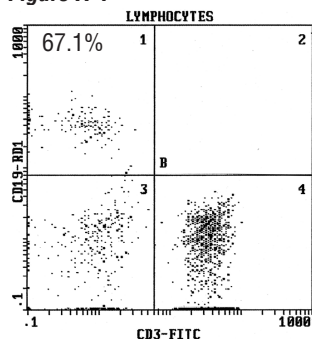
## Results

Cell sorting results using BioMag SelectaPure Human T cell Enrichment Systems are shown below. Typically, purified leukocytes and particles are incubated for 20-30 minutes and then magnetically separated. The supernatant is collected, incubated with the appropriate two-color antibody cocktail, and then analyzed by flow cytometry. The particle to cell ratios reported are based on experiments where the cells were exposed to the particles once.

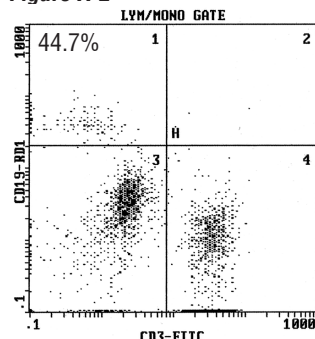
*Note:* The values in the Purity Before and After Enrichment Charts should be used as a starting point in optimizing experimental protocols. Due to differences in the distribution of cell types in samples and other variables, the researcher is strongly encouraged to determine the optimal particle to cell ratios for their experiments.

**Cell sorting results with BioMag® SelectaPure Human CD3+ T cell Enrichment Systems.** Figures A-1 through A-3 depict the cell populations prior to enrichment. Figures B-1 through B-3 depict the cell populations after enrichment.

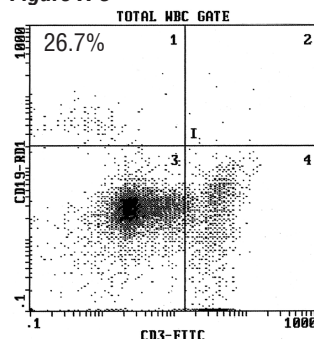
**Figure A-1**



**Figure A-2**



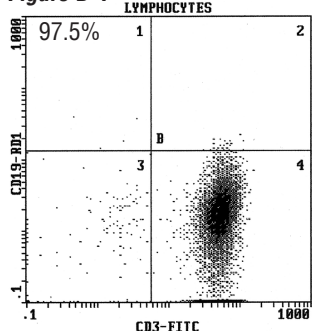
**Figure A-3**



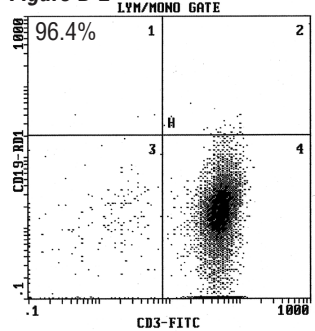
The BioMag SelectaPure Human CD3+ T cell Enrichment System targets removal of CD19+, CD16+, CD14+, CD56+, CD11b+ and CD36+ cells. The particle to target cell ratio is 5.6.

Cell Type	Purity Before Enrichment	Purity After Enrichment
Lymphocytes	67.1%	97.5%
Lymphocytes, Monocytes	44.7%	96.4%
Lymphocytes, Monocytes, Neutrophils	26.7%	95.0%

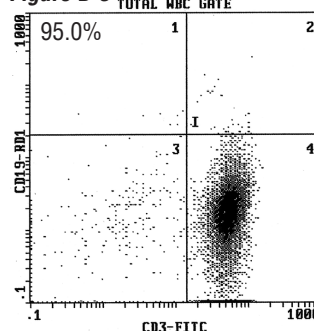
**Figure B-1**



**Figure B-2**

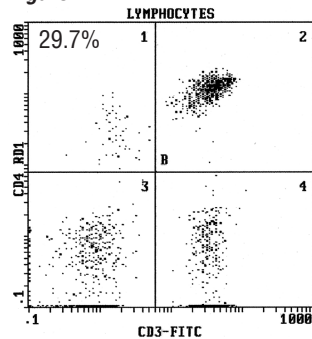


**Figure B-3**

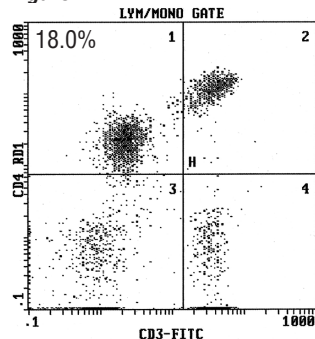


**Cell sorting results with BioMag® SelectaPure Human CD4+ T cell Enrichment Systems.** Figures A-1 through A-3 depict the cell populations prior to enrichment. Figures B-1 through B-3 depict the cell populations after enrichment.

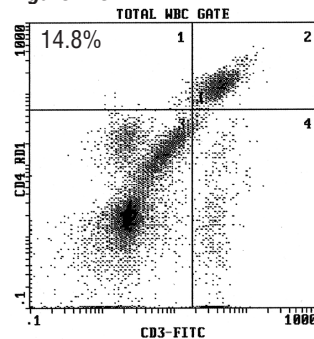
**Figure A-1**



**Figure A-2**



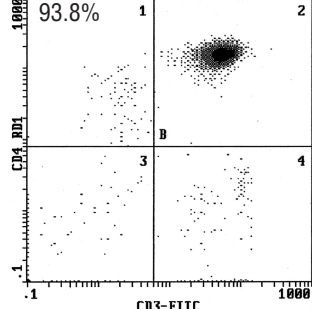
**Figure A-3**



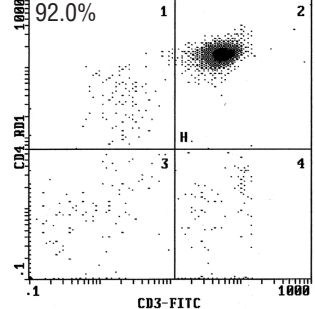
The BioMag SelectaPure Human CD4+ T cell Enrichment System targets removal of CD19+, CD16+, CD14+, CD56+, CD11b+, CD36+ and CD8+ cells. The particle to target cell ratio is 6.0.

Cell Type	Purity Before Enrichment	Purity After Enrichment
Lymphocytes	29.7%	93.8%
Lymphocytes, Monocytes	18.0%	92.0%
Lymphocytes, Monocytes, Neutrophils	14.8%	90.7%

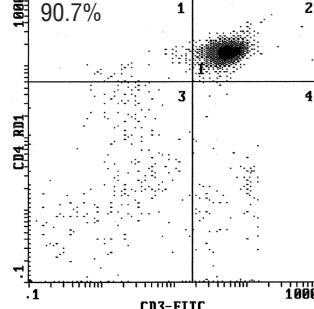
**Figure B-1**



**Figure B-2**



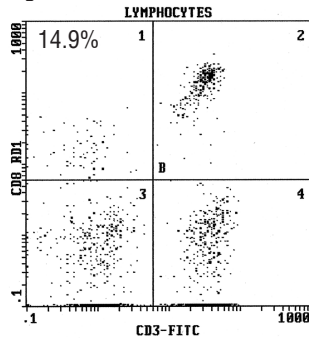
**Figure B-3**



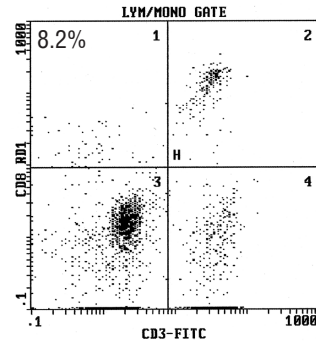
Should any of our materials fail to perform to our specifications, we will be pleased to provide replacements or return the purchase price. We solicit your inquiries concerning all needs for life sciences work. The information given in this bulletin is to the best of our knowledge accurate, but no warranty is expressed or implied. It is the user's responsibility to determine the suitability for their own use of the products described herein, and since conditions of use are beyond our control, we disclaim all liability with respect to the use of any material supplied by us. Nothing contained herein shall be construed as a recommendation to use any product or to practice any process in violation of any law or any government regulation.

**Cell sorting results with BioMag® SelectaPure Human CD8+ T cell Enrichment Systems.** Figures A-1 through A-3 depict the cell populations prior to enrichment. Figures B-1 through B-3 depict the cell populations after enrichment.

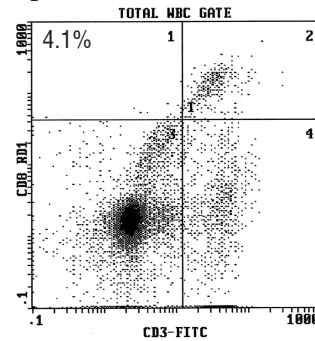
**Figure A-1**



**Figure A-2**

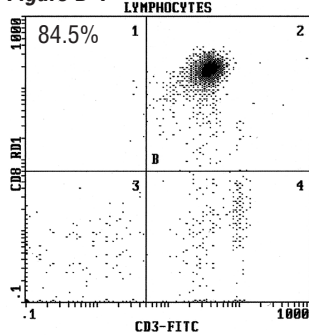


**Figure A-3**

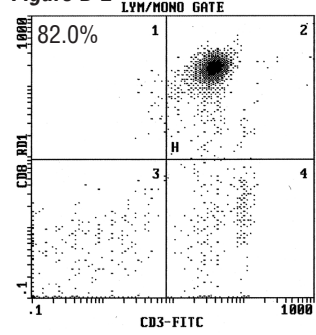


The BioMag SelectaPure Human CD8+ T cell Enrichment System targets removal of CD19+, CD16+, CD14+, CD56+, CD11b+, CD36+ and CD4+ cells. The particle to target cell ratio is 6.0.

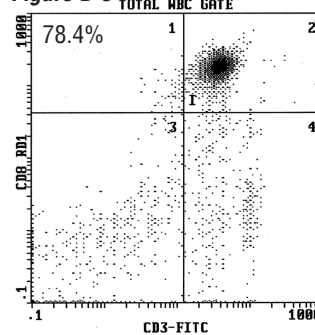
**Figure B-1**



**Figure B-2**



**Figure B-3**



Cell Type	Purity Before Enrichment	Purity After Enrichment
Lymphocytes	14.9%	84.5%
Lymphocytes, Monocytes	8.2%	82.0%
Lymphocytes, Monocytes, Neutrophils	4.1%	78.4%

## Characteristics

- Mean Diameter: ~1.5µm
- Particle Concentration: 1 mg/ml
- Particle Count: 1 x 10<sup>8</sup> particles/mg

## Material

### Material Supplied

- BioMag SelectaPure T cell Enrichment particles, 1ml or 5ml

### Material Required

- Phosphate buffered saline (PBS)
- Ficoll
- Whole blood
- Test tubes
- Centrifuge
- Magnetic separator

## Procedure

Researchers are advised to optimize the use of particles in any application.

Depending on the antigen availability and the size of the target cell population, cell sorting applications may require up to 50-60 magnetic particles per cell based on the target cell population. Magnetic particles and cells should be incubated at room temperature or

Should any of our materials fail to perform to our specifications, we will be pleased to provide replacements or return the purchase price. We solicit your inquiries concerning all needs for life sciences work. The information given in this bulletin is to the best of our knowledge accurate, but no warranty is expressed or implied. It is the user's responsibility to determine the suitability for their own use of the products described herein, and since conditions of use are beyond our control, we disclaim all liability with respect to the use of any material supplied by us. Nothing contained herein shall be construed as a recommendation to use any product or to practice any process in violation of any law or any government regulation.

at lower temperatures, even as low as 4°C; however, incubation times should be extended at lower temperatures. A general procedure for T cell enrichment follows.

### Cell Enrichment Protocol

1. Mix 5ml of Ficoll with 5ml of whole blood.
2. Centrifuge at 400 x g for 30 minutes.
3. Isolate the mononuclear fraction from the interface and place in a fresh tube.
4. Bring the mononuclear fraction to 10ml with PBS. Gently mix and then centrifuge at 300 x g for 10 minutes.
5. Carefully remove the supernatant, resuspend the cell pellet in 10ml of PBS, and centrifuge at 300 x g for 10 minutes.
6. Carefully remove the supernatant and resuspend the pellet in 5ml (original blood volume) of PBS.
7. Count the cells and adjust the concentration to 2 - 5 x 10<sup>6</sup>/ml in PBS.
8. Wash 50-100µl of the BioMag suspension by magnetically separating the particles, removing the supernatant, and resuspending the particles in an equal volume of PBS.
9. Add 1ml of the mononuclear fraction to the washed BioMag particles, mix, and incubate for 20-30 minutes. *Note:* Incubation temperature can vary. Incubation at 4°C is recommended for most applications. Incubation at room temperature has also produced good results.
10. Magnetically separate until the supernatant is relatively clear (3-5 minutes); collect the supernatant to a fresh tube. This is the enriched fraction.
11. Test the enriched cell population by flow cytometry after staining the cells with the appropriate labeled antibody cocktail. A suggestion would be to test the T cell enriched fraction by staining with anti-CD3FITC and anti-CD19RD1.

### Storage and Stability

Store at 4°C. Freezing, drying, or centrifuging of BioMag may result in irreversible aggregation and loss of binding activity. Washing BioMag SelectaPure T cell Enrichment particles in sterile media to remove preservative prior to use is recommended. Using a magnetic separation unit for washing instead of centrifugation is also strongly recommended.

### Safety

This particle suspension contains sodium azide. Sodium azide may react with lead and copper plumbing to form explosive metal azides. Upon disposal of material, flush with a large volume of water to prevent azide accumulation. Please consult the Material Safety Data Sheet for more information.

**This product is for research use only and is not intended for use in humans or for *in vitro* diagnostic use.**

### Ordering Information

Catalog Number	Description	Size
85073-1	BioMag <sup>®</sup> SelectaPure Human CD3+ T cell Enrichment System	1ml
85073-5	BioMag <sup>®</sup> SelectaPure Human CD3+ T cell Enrichment System	5ml
85074-1	BioMag <sup>®</sup> SelectaPure Human CD4+ T cell Enrichment System	1ml
85074-5	BioMag <sup>®</sup> SelectaPure Human CD4+ T cell Enrichment System	5ml
85078-1	BioMag <sup>®</sup> SelectaPure Human CD8+ T cell Enrichment System	1ml
85078-5	BioMag <sup>®</sup> SelectaPure Human CD8+ T cell Enrichment System	5ml

### To Order

In The U.S. Call: 1-800-523-2575 • 215-343-6484  
 In The U.S. FAX: 1-800-343-3291 • 215-343-0214

In Germany Call: (49) 6221-765767  
 In Germany FAX: (49) 6221-764620

Order online anytime at [www.polysciences.com](http://www.polysciences.com).

Should any of our materials fail to perform to our specifications, we will be pleased to provide replacements or return the purchase price. We solicit your inquiries concerning all needs for life sciences work. The information given in this bulletin is to the best of our knowledge accurate, but no warranty is expressed or implied. It is the user's responsibility to determine the suitability for their own use of the products described herein, and since conditions of use are beyond our control, we disclaim all liability with respect to the use of any material supplied by us. Nothing contained herein shall be construed as a recommendation to use any product or to practice any process in violation of any law or any government regulation.