

9025 Technology Dr. • Fishers, IN 46038-2886  
800.387.0672 • 317.570.7020 • Fax 317.570.7034  
info@bangslabs.com • www.bangslabs.com

**B E A D S ● A B O V E T H E R E S T ™**

## Description

The QuantumPlex kit is designed to be used as a multiplexing platform, allowing for the efficient, qualitative flow cytometric analysis of a sample for multiple analytes, or the high throughput screening of multiple samples.

QuantumPlex kits are available in five-bead sets of microspheres sized 4.4µm (Catalog Code 215), 5.5µm (Catalog Code 218) and in ten-bead sets comprised of the two (Catalog Code 219). Each five-bead set consists of five (5) bead populations internally dyed with varying intensities of Starfire Red™ fluorescent dye (fluorescent in FL3). Each bead is uniformly coated with streptavidin (SA). The SA surface allows for the easy conjugation of biotinylated analytes or analyte-specific antibodies to the surface of each bead. The beads may then be incubated with a sample and washed before a fluorescently-tagged reporter antibody is added. After a second wash and resuspension, the beads may be analyzed with a flow cytometer to determine the presence or absence of the assayed analyte.

## Characteristics

Mean Diameter: 4.4µm (Catalog Code 215) or 5.5µm (Catalog Code 218)  
Particle Concentration: 1 x 10<sup>6</sup> microspheres/mL

## Material

### Material Supplied

- QuantumPlex SP microspheres: bottled individually in 1mL, 5mL, or 10mL aliquots

### Material Required

- Biotinylated analyte or antibody specific to the analyte(s) of interest
- Buffered wash solution
- Fluorescently-labeled reporter antibody (Fluorescent in FL1 or FL2)

## Procedure

Researchers are advised to optimize the use of particles in any application.

The QuantumPlex kit allows for flexibility in designing individual experiments. The preparation procedure outlines the conjugation of a single biotinylated antibody to a QuantumPlex bead. Conjugating each of the beads to a single antibody specific to a different analyte yields a kit capable of testing a single sample for multiple analytes. The user may choose instead to conjugate antibodies of different specificities to each bead, producing a kit ideal for screening multiple samples at once. The user may further choose to conjugate antigen to the beads, yielding a kit capable of testing for the presence of specific antibody. The specific application is to be determined by the user. It may be helpful to make a table to keep track of which antibodies or analytes have been conjugated to each bead population. The following outline serves as a guide, and may be modified to reflect the user's specific application.

### Preparation of Microspheres

1. Vigorously shake or vortex the bottle prior to use to ensure uniform suspension of beads.
2. Immediately remove 10µL of solution to be labeled with biotinylated antigen or antibody. Note: The 10µL volume reflects the amount needed to conduct one test using the given bead population. For ease of use, the entire 1mL may be labeled all at once, and then stored for use with each test.
3. Using an excess of biotinylated antigen or antibody, conjugate the antigen or antibody to the bead using established protocols.

*Note:* One approach is to simply incubate the beads and the mouse antibody together for 30 minutes. See also TechNote 101, 'ProActive® Microspheres,' for sample conjugation protocols.

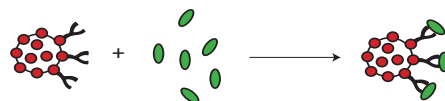
4. Wash the beads to remove any unbound antigen or antibody.
5. Resuspend beads in ~100µL buffer.



**Figure 1:** Biotinylated antibody conjugated to QuantumPlex Streptavidin microsphere

**Testing Samples**

1. Incubate prepared beads with 100µL sample(s) for 30 minutes. (The volume of sample used may be adapted to the specific application.)
2. Wash beads to remove non-specifically bound analyte. Repeat the wash step.



**Figure 2:** Sample analyte bound to QuantumPlex™ microsphere after first incubation

3. Incubate the beads with 20µL of the appropriate fluorescently labeled antibody for 30 minutes.
4. Wash beads to remove non-specifically bound antibody. Repeat the wash step.

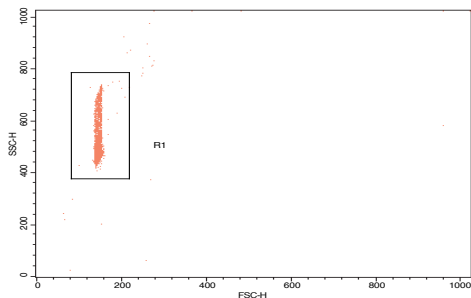


**Figure 3:** "Sandwich" complex formed with addition of reporter antibody

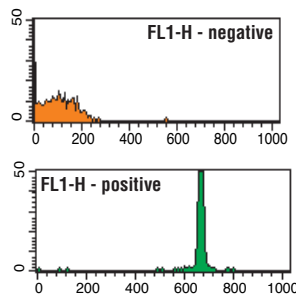
5. Combine all beads in one tube and acquire data events using a flow cytometer.

**Data Analysis**

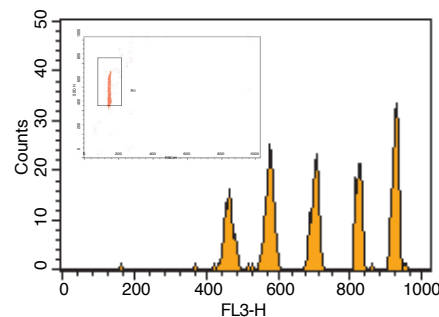
1. Gate on the singlet population(s) on a Forward Scatter vs. Side Scatter plot. (Figure 4)
2. Using the FL1 and/or FL2 channels (depending on the reporter antibodies used) determine whether or not any bead populations tested "positive" for the analyte. (Figure 5) *Note:* A positive bead will produce a fluorescence peak in the FL1 or FL2 channel. The minimum fluorescence intensity needed to be considered "positive" is based on the Relative Channel Value (RCV) of the peak. It is up to the investigator to determine what threshold RCV value will constitute a "positive" result.
3. Using your flow cytometry analysis software, determine which bead populations produced positive results. The use of "back-gating" may simplify this task. (Figure 6)
4. Based upon the beads that produced positive results, determine which samples contained the analyte, or which analytes the samples contained.



**Figure 4**



**Figure 5**



**Figure 6**

**Storage and Stability**

Store at 2-8°C. Freezing may result in irreversible aggregation and loss of binding activity. QuantumPlex kits are stable for 12 months from date of purchase, provided the product is handled in accordance with the manufacturer's recommendations. The beads should be



kept in the bottle in which they are shipped. Do not expose the beads to intense light sources for extended periods of time.

**Safety**

This particle suspension contains sodium azide. Sodium azide may react with lead and copper plumbing to form explosive metal azides. Upon disposal of material, flush with a large volume of water to prevent azide accumulation. Please consult the Material Safety Data Sheet for more information.

**This product is for research use only and is not intended for use in humans or for *in vitro* diagnostic use.**

**Ordering Information**

<b>Catalog Code</b>	<b>Description</b>	<b>Sizes</b>
215	QuantumPlex™ Streptavidin 4.4µm (5 dye intensities)	1mL, 5mL or 10mL
218	QuantumPlex™ Streptavidin 5.5µm (5 dye intensities)	1mL, 5mL or 10mL
219	QuantumPlex™ Streptavidin 4.4µm and 5.5µm (2 x 5 dye intensities)	1mL, 5mL or 10mL

Order online anytime at [www.bangslabs.com](http://www.bangslabs.com).