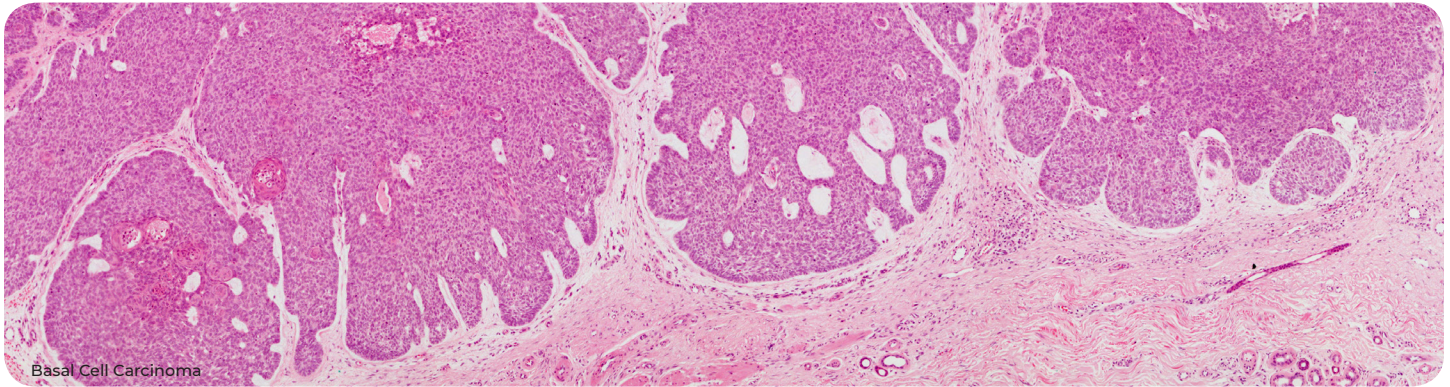
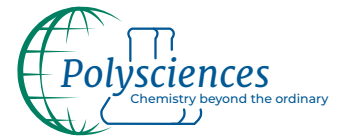


# MOHS LAB STARTER KIT

For Processing & Embedding



Basal Cell Carcinoma

Our Mohs Lab Starter Kits are designed to perfect orientation of excised surgical biopsies. This method of permanently marking multiple margins of the specimen was originally documented by Dr. Frederic Mohs to aid in skin cancer diagnosis and remains a highly beneficial dermatopathology technique for surgeons and pathologists. The marking dyes applied to the specimen are impervious to processing reagents, embedding mediums, and staining reagents. This allows the important markings to be visualized by the pathologist to aid in diagnosis.

Dyes will bind permanently to the tissue surface within 1 to 2 minutes when allowed to air dry. Freezing or formalin fixation will not interfere with the dye performance. A typical method is to apply the dyes to fresh tissue, though they are successfully used with formalin fixed tissue.

Another benefit of the kits is the ability to reduce excessive alcohols in the lab while creating a safer and more efficient staining process. This strategy can save the laboratory both time and materials.

**No setting spray required!**

## KITS CONTAIN

### Mohs Lab Starter Kit (5 color)

- PolyFreeze Frozen Mounting Medium (6 x 4oz)
- Tissue Marking Dye 5-Color Kit (Blue, Black, Green, Red, Yellow), Block Holder, Applicators (15 sticks)
- Tissue Tack (+ Charged) Microscope Slides)
- Aqua-Poly/Mount
- CitraMount™ Medium
- Delicate Melanin Bleach Kit (2 x 250ml)
- Peel-A-Way Disposable Embedding Molds Sampler Pack

### Mohs Lab Starter Kit w/ Diagnostic Stains

- PolyFreeze Frozen Mounting Medium (6 x 4oz)
- Tissue Marking Dye 5-Color Kit (Blue, Black, Green, Red, Yellow), Block Holder, Applicators (15 sticks)
- Tissue Tack (+ Charged) Microscope Slides)
- Aqua-Poly/Mount
- CitraMount™ Medium
- Hematoxylin, Gills 3
- Eosin
- Bluing Reagent
- Delicate Melanin Bleach Kit (2 x 250ml)
- Peel-A-Way Disposable Embedding Molds Sampler Pack

### Mohs Lab Starter Kit

Cat. #	Description
26417-1	Mohs Lab Starter Kit (5 color)
26418-1	Mohs Lab Starter Kit with Diagnostic Stains

Order today at [Polysciences.com](https://www.polysciences.com)