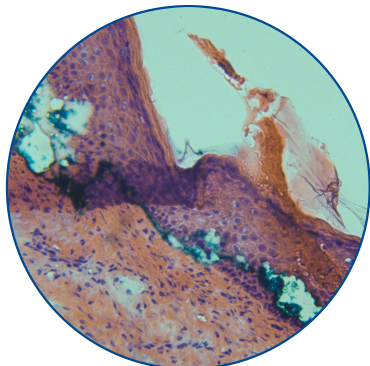
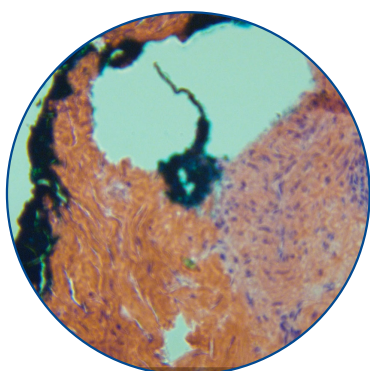


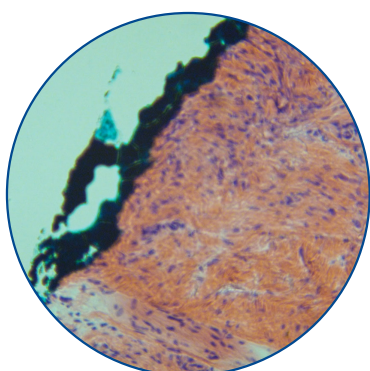
## FastFix



Frozen Section Skin 10X before **FASTFix**



Frozen Section Skin 10X after **FASTFix**



Frozen Section Skin 10X with **FASTFix**  
and Tissue Marking Dye

**FASTFix** is a solution that enables the Histotechnologist to provide a fast turnaround time in staining the section while the tissue adheres to the slide and stains optimally.

Frozen sections are a quick diagnostic tool while the surgeon is operating on the patient and expects a quick answer on margins being clear on malignancies. Frozen sections are preformed under extreme pressure and are timed according to CAP regulations, therefore it is in the interest of patient care to get the best stained section to the pathologist as quickly as possible.

- Cut frozen staining down by 5-10 minutes
- Allow semi-thin frozen sections for 2 minutes in **FASTFix** (6-10 microns)
- Allow thin sections for 10 seconds in **FASTFix** (2-3 microns)
- **FASTFix** frozen sections, touch preps, cytopreps and smears for higher quality H&E staining on the frozen section stain line
- **FASTFix** and Tissue Tack slides provide the best combination for high quality H&E stained frozen sections (prevent slide tissue wash offs, detachment, and folds on frozen sections.)
- Epidermis for MOHs and Derm specimens result in wrinkle-free sections, preserves morphology of margins and prevents the excision of more tissue from the patient when used with PolyFreeze
- Prevent drying artifacts on slides that leads to significant loss of nuclear detail and fluid leakage from the cytoplasm.
- Keep fatty frozen sections from washing off by using **FASTFix** before H&E staining
- Great nuclear morphology for lymph nodes surrounded by a large amount of fat.

Size: 100ml, 500ml

Cat. #: 24607