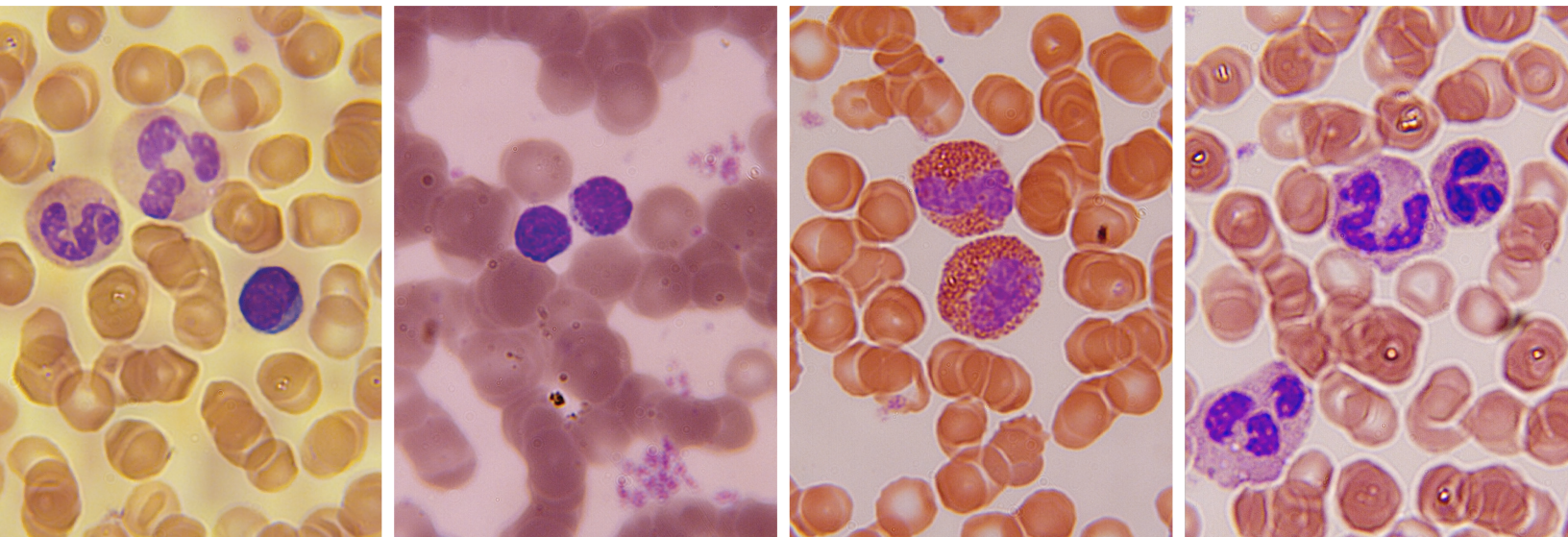


## **StainRITE™** Ready-to-Use Stains



## **Hematology Stains & Buffers**

## StainRITE™ Ready-to-Use Hematology Stains

Since Romanowsky successfully used Methylene Blue solution in 1891 to detect malarial parasites in blood, hematologists have been formulating stains for the study of blood.

Polysciences, Inc. carries on the tradition with the introduction of **StainRITE™** Ready-to-Use Stains for Hematology. All of our formulations have been carefully optimized for peak performance in the lab. Crisp nuclear detail from our ready-to-use solutions makes the differentiation of human blood cells easier to identify.

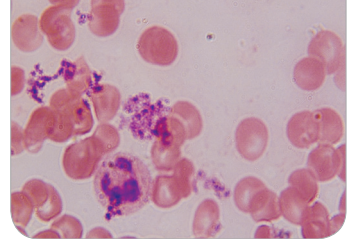
### StainRITE™ Wright-Giemsa Stain Solution

Dual purpose stain useful for blood films, parasites and bone marrow aspirates. Prepared from certified dyes. This ready-to-use solution makes the differentiation of human blood cells much easier to identify. Based on a commonly used Azure-Eosin formula.

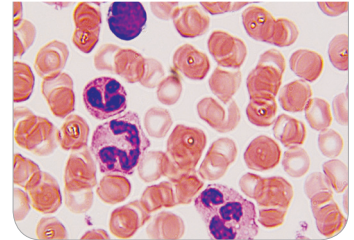
#### Stain Results:

Erythrocytes	light pink to moderate purple, not grey or blue
Polymorphonuclear Neutrophils	blue to dark blue to purple nuclei reddish purple lilac granules, pale pink cytoplasm
Eosinophils Cytoplasm	blue to dark blue to purple nuclei, red to orange-red granules, blue cytoplasm
Basophils	purple to dark blue to black nuclei, purple granules
Lymphocytes and Monocytes	dark purple nuclei, sky blue cytoplasm
Platelets	violet to purple granules

Competitor A (Wright-Giemsa Stain)



Polysciences (Wright-Giemsa Stain)



*Brilliant nuclear and cytoplasmic detail, nuclear staining is polychromatic and chromatin is a well-defined deep purple color; monocytes exhibit a brilliant sky blue stained cytoplasm*

### StainRITE™ Wright-Giemsa Stain Phosphate Buffer pH 6.8

Used as a buffer in Wright-Giemsa and May-Grünwald Giemsa staining procedures.

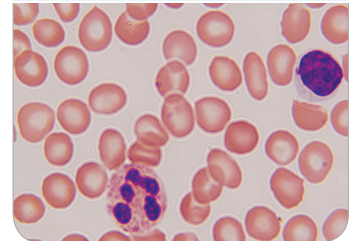
### StainRITE™ Wright Stain Solution

Dual purpose stain used for staining blood smears and bone marrow aspirates. Ready-to-use option makes the differentiation of human blood cells much easier to identify.

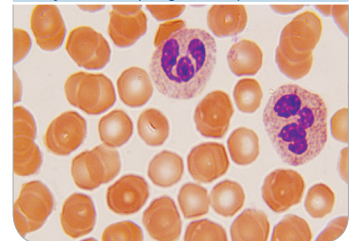
#### Stain Results:

Erythrocytes	yellowish red
Polymorphonuclear Neutrophils	dark blue nuclei, reddish lilac granules, pale pink cytoplasm
Eosinophils Cytoplasm	blue nuclei, red to orange-red granules, blue cytoplasm
Basophils	purple to dark blue nuclei, dark purple granules
Lymphocytes and Monocytes	dark purple nuclei, sky blue cytoplasm
Platelets	violet to purple granules

Competitor A (Wright Stain)



Polysciences (Wright Stain)

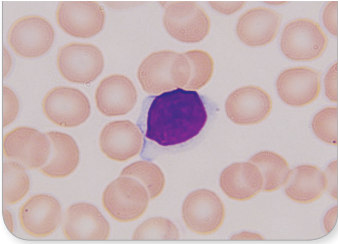


*Brilliant red erythrocytes staining, crisp nuclear granule color detail*

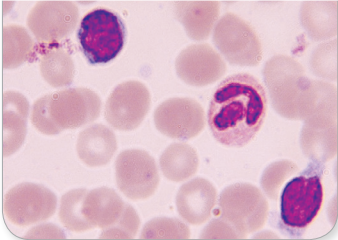
### StainRITE™ Wright Stain Phosphate Buffer pH 6.8

Yields excellent staining results every time when used with the Wright staining method.

Competitor A (May-Grünwald Stain)

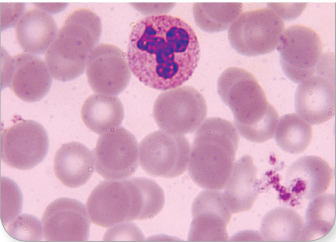


Polysciences (May-Grünwald Stain)



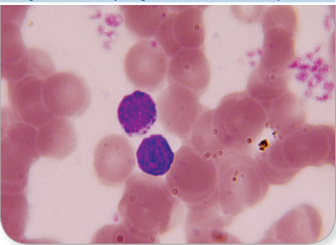
Brilliant, crisp nuclear detail with vibrant colors

Polysciences (May-Grünwald Stain)



Granulocytes have crisp cytoplasmic detail as well as nuclear detail

Polysciences (May-Grünwald Stain)



Granules are seen throughout cytoplasm and nucleus

## StainRITE™ May-Grünwald Stain Solution

Classic hematology stain that produces dense coloration in the staining of peripheral blood smears and bone marrows.

### Stain Results:

Erythrocytes	light pink to moderate purple, not grey or blue
Polymorphonuclear Neutrophils	blue to dark blue to purple nuclei, reddish purple lilac granules, pale pink cytoplasm
Eosinophils Cytoplasm	blue to dark blue to purple nuclei, red to orange-red granules, blue cytoplasm
Basophils	purple to dark blue to black nuclei, purple granules
Lymphocytes and Monocytes	dark purple nuclei, sky blue cytoplasm
Platelets	violet to purple granules

## StainRITE™ Giemsa Stain (for May-Grünwald)

Classic blood film stain for peripheral blood smears and bone marrow specimens, used to visualize chromosomes, stain fungus histoplasma and identify mast cells.

(To be used in conjunction with our May-Grünwald Stain Solution, Cat. #24981)

## StainRITE™ May-Grünwald Giemsa Phosphate Buffer pH 7.2

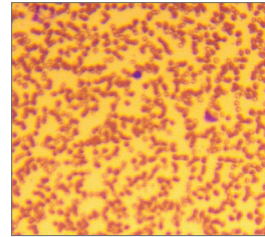
Used as a buffer in May-Grünwald, Wright Stain, Wright-Giemsa, Giemsa and Leishman staining procedures for a darker contrast in nuclear as well as cytoplasmic detail.

Cat. #	Sizes
<b>StainRITE™ Wright-Giemsa Stain Solution</b>	
24985	1L, 10L
<b>StainRITE™ Wright-Giemsa Stain Phosphate Buffer pH 6.8</b>	
24984	1L, 4L
<b>StainRITE™ Wright Stain Solution</b>	
24986	1L, 4L, 20L
<b>StainRITE™ Wright Stain Phosphate Buffer pH 6.8</b>	
24989	1L, 4L
<b>StainRITE™ May-Grünwald Stain Solution</b>	
24981	1L, 4L
<b>StainRITE™ Giemsa Stain (for May-Grünwald)</b>	
25038	100ml, 400ml
<b>StainRITE™ May-Grünwald Stain Phosphate Buffer pH 7.2</b>	
25032	1L, 4L

## Additional Hematology Products

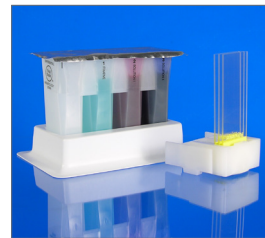
### Differential Quik Stain Kit

High quality, rapid turnaround staining kit that serves many purposes in a cost conscious laboratory environment. Differential Quik Stain is an optimal hematology stain for differential assessment of rapid blood smears, as well as detecting *H. pylori* microorganism. Useful in such applications as: Blood Smears, Fine Needle Aspirations, Frozen Sections, Cytological Specimens, Bone Marrow Biopsies, Touch Preps and Microorganism Detection. Interpret results in 15 seconds!



### Neat Stain Hematology Stain Kit

Three-step procedure for differentiation of morphological cell types in peripheral blood smears. Staining characteristics are similar to traditional Wright and Wright-Giemsa stains. Offers flexibility of a three dip staining sequence in both the stain and counter-stain solutions. Specifically designed for stat procedures and/or laboratories using manual staining methods. Also useful for Andrology labs staining microorganisms and spermatozoa. Kit performs 150 tests.



### Super Decalcifier I - Delicate

Recommended for mildly calcified specimens such as bone marrow biopsies (core), and specimens that require fast diagnostic work such as IHC, cytochemistry and special stain procedures. Ready-to-Use formula produces enhanced nuclear detail in both human and animal tissue. Environmentally safe and biodegradable.



### Gold Standard Series: Acetic Acid Formalin

Designed to fix lymphoreticular myeloid, lymph nodes and bone marrow tissues.

### Terry's Polychrome Methylene Blue 2% aqueous

A STAT staining method for unfixed and fixed tissue. Stains nuclei more strongly than cell cytoplasm. Excellent for frozen sections.

### Sudan Black B, C.I. 26150, Certified

Useful for staining neutral triglycerides and lipids on frozen sections and some lipoproteins on paraffin sections. Has the appearance of a dark brown to black powder with maximum absorption at 596-605nm and melting point of 120-124°C. Similar dyes include Oil Red O, Sudan III and Sudan IV.

### Leishman Stain

For staining bone marrow and blood smears to identify leucocytes, malarial parasites and trypanosomas.

Cat. #	Sizes
<b>Differential Quik Stain Kit</b>	
24606 (1 Kit)	250ml, 500ml, 1 gallon
<b>Neat Stain Hematology Stain Kit</b>	
25034	1 kit
<b>Super Decalcifier I - Delicate</b>	
24888	500ml, 1L, 1 case (6x1 liter)
<b>Gold Standard Series: Acetic Acid Formalin</b>	
24910	500ml, 1L
<b>Terry's Polychrome Methylene Blue 2% Aqueous</b>	
09978	470ml
<b>Sudan Black B, C.I. 26150, Certified</b>	
25008	25g
<b>Leishman Stain</b>	
25001	25g

#### Corporate Headquarters

Polysciences, Inc.  
400 Valley Road  
Warrington, PA 18976  
1 (800) 523-2575  
info@polysciences.com

#### European Office

Polysciences Europe GmbH  
Badener Str. 13  
69493 Hirschberg an der Bergstr.  
Germany  
+(49) 6201 845 20 0  
info@polysciences.de

#### Asia Pacific Office

Polysciences Asia Pacific, Inc.  
2F-1, 207 DunHua North Road  
Taipei, Taiwan 10595  
(886) 2 8712 0600  
info@polysciences.tw

[www.polysciences.com](http://www.polysciences.com)

70121\_Rev. 072011