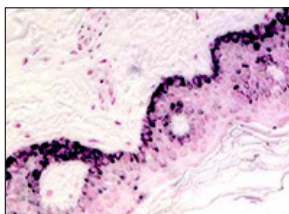




StainRITE™ Ready-to-Use Silver Stain Kits

Fontana Masson

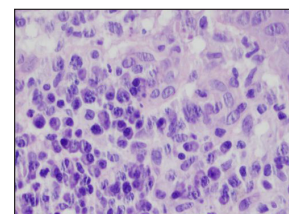
Intended for the histological visualization of Argentaffin cells and Melanin in paraffin or frozen sections. Designed to stain formalin fixed, paraffin embedded tissue sections, and may be use for frozen sections as well.



Cat. #: 25104 Size: 1 kit

Steiner & Steiner

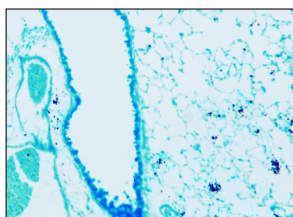
Useful to aide the diagnosis of diseases such as syphilis, some gastric ulcers, *H. pylori*, Lyme disease, Legionnaire's disease, Cat Scratch fever and others dependent on staining of the causative organisms.



Cat. #: 25095 Size: 1 kit

Grocott Methenamine Silver (GMS)

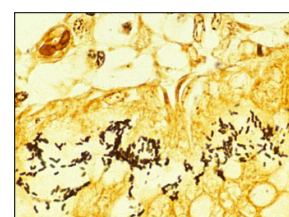
For the visualization of fungi and *Pneumocystis jiroveci* in tissue sections. Can be used on tissue, aspirates or smears. The alkaline hexamine-silver solution allows silver ions, upon reduction to appear dark or black.



Cat. #: 25087 Size: 1 kit

Warthin-Starry

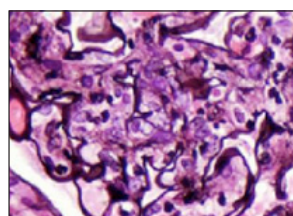
Identifies Spirochetes and other bacteria such as *H. pylori* and two causative agents of cat scratch disease, *Bartonella henselae* and *Afipia felis*. Warthin-Starry Stain relies on the ability of certain bacteria to bind silver ions from solution. Subsequent addition of a reducing agent converts this bound silver to visible metallic silver.



Cat. #: 25093 Size: 1 kit

Jones PAS-M

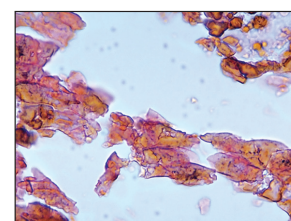
Improved Jones PAS-M technique that utilizes an enhancer to accelerate the methenamine silver reaction with the glomerular basement membranes, while reducing the time to achieve results better than the original Jones PAS-M and a more stabilized silver solution. Used in kidney biopsies.



Cat. #: 25091 Size: 1 kit

Von Kossa Method for Calcium

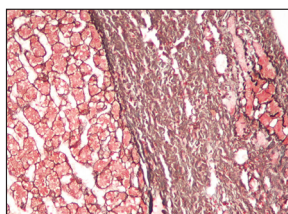
Demonstrates only calcium phosphate and calcium carbonate salts. Used as a bone stain to indicate osteomalacia or in other paraffin embedded tissues to stain calcium deposits seen in metabolic diseases, Paget's disease, renal osteodystrophy & hyperparathyroidism, necrotic areas associated with TB, infarction (Gandy Gamna bodies), atheroma in blood vessels and Malakoplakia in the bladder (Michaelis-Gutman bodies).



Cat. #: 24633 Size: 1 kit

Reticulin

Identifies reticulin fibers in tissue sections such as liver, kidney and spleen. Reticulin Stain Kit is a metal impregnation technique, where ammoniacal silver initially binds to the tissue component of interest, the reducing agent (formalin) produces a dark insoluble precipitate, then treated by toning and fixing in sodium thiosulfate.



Cat. #: 25094 Size: 1 kit

We offer a complete line of Biosciences products, to learn more visit polysciences.com