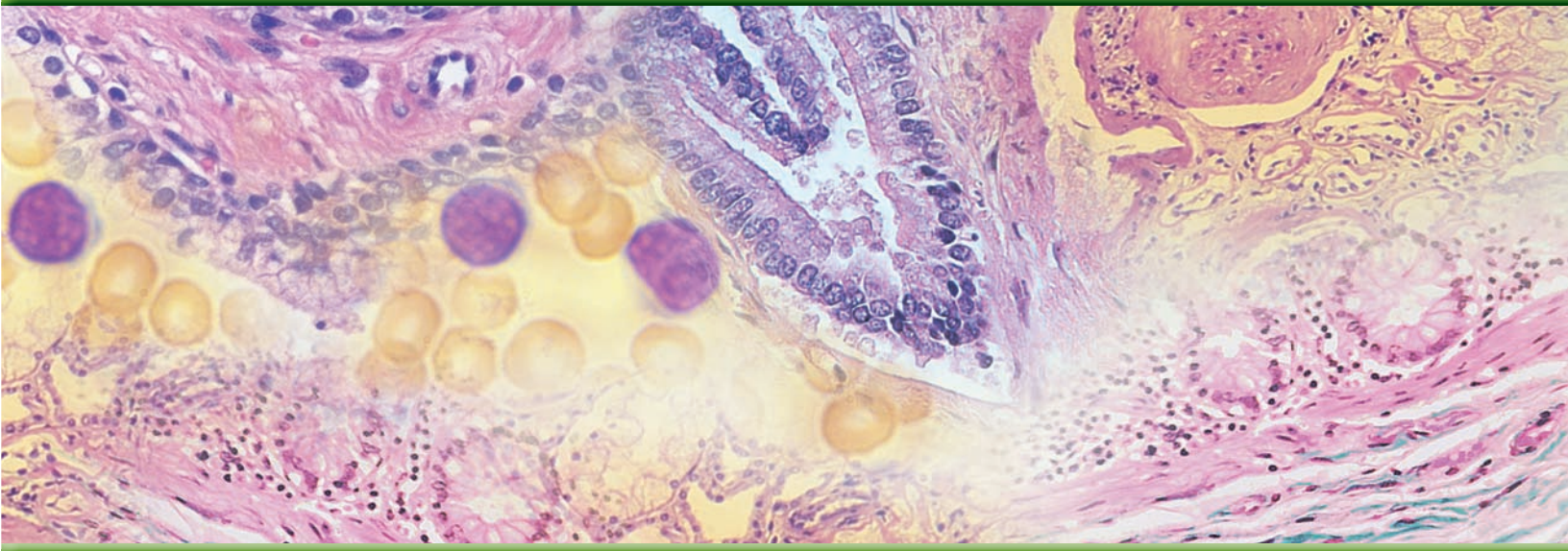
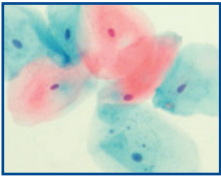


***Stain*RITE™**
Ready-to-Use Stains

Routine Stains Product Guide



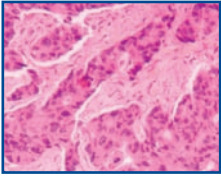
Gill's Hematoxylin #1 for Cytology



Formulated for routine cytology staining. This single strength formula optimally stains gynecological and non-gynecological specimens. Can be used for staining filters and membranes. General purpose nuclear stain, progressive type. Used with hematoxylin and eosin staining.

Cat. #: 24242 **Size:** 500ml, 1000ml

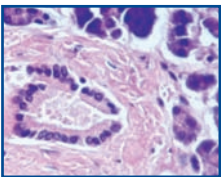
Gill's #2, double strength for Histology & Cytology



Used when a stronger or darker nuclear stain is required for cytology or immuno-histochemistry (IHC) counterstaining. Gill's #2 formulation is a double strength mixture, stains darker and more quickly than Gill's #1. General purpose nuclear stain, progressive type. Used with hematoxylin and eosin staining.

Cat. #: 24243 **Size:** 500ml, 1000ml

Gill's #3, triple strength for Histology



Appropriate for routine histology staining where a darker nuclear stain is desired. This is a triple strength formula requiring shorter staining times. Formula is very stable and does not require filtering prior to each use. General purpose nuclear stain, progressive type. Used with hematoxylin and eosin staining.

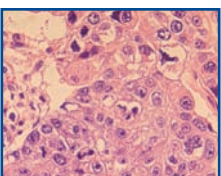
Cat. #: 24244 **Size:** 500ml, 1000ml

Gill's Modified OG-6 & EA

Orange-6 and EA are the two cytoplasmic counterstain solutions that are used sequentially in the Papanicolaou staining method for clinical cytology. Gill's modified OG-6 and EA are stable in solution and give predictable high quality staining results not previously possible with other formulations.

Cat. #: 09782 **Size:** 500ml, 1000ml, 3.75L (OG-6)
09783 500ml, 1000ml, 3.75L (EA)

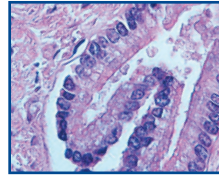
Harris Hematoxylin, Acidified (mercury-free)



Used with hematoxylin and eosin staining. Use Harris Hematoxylin for routine histology and cytology. Similar results can be achieved to those of Gill's Hematoxylin #1, #2 and #3 formulations by varying staining times. General purpose nuclear stain, regressive type.

Cat. #: 24245 **Size:** 500ml, 1000ml

Mayers Hematoxylin



Use for both cytology and histology. General purpose nuclear stain, used with hematoxylin and eosin staining. Used as a counterstain for immunohistochemistry procedures.

Cat. #: 24821 **Size:** 500ml, 1L

Hematoxylin, C.I. 75290, certified (Natural black 1)

Nuclear protein stain and glycogen stain. General tissue stain for human, animal and/or VIR histology. Molecular Weight: 302.3

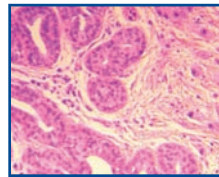
Cat. #: 02749 **Size:** 25g, 100g

Eosin Y, 0.5% alcoholic solution, Acidic

Used as counterstain with hematoxylin; contains acetic acid. Does not contain isopropanol or methanol. Ready-to-Use with any automated stainer.

Cat. #: 09859 **Size:** 500ml, 1000ml, 3.75L

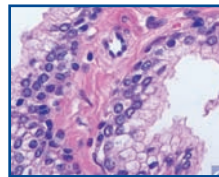
Eosin Y, 1.0% alcoholic solution, Non-Acidic



Cytoplasmic counterstain useful in immunohistochemistry or treatment of tissue sections with hematoxylin. Contains no acetic acid. Ready-to-use with any automated stainer.

Cat. #: 17269 **Size:** 500ml, 1000ml

Ammonium Blue



Very rapid formulation for bluing hematoxylin in only 3 minutes. Ammonium Blue is buffered at an alkalinity of pH = 10.0. Our premixed and ready-to-use Ammonium Blue provides crisp nuclear detail obtained with Hematoxylin and Eosin stains. For use in both cytology and histology.

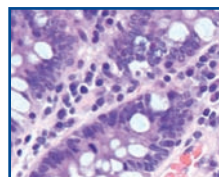
Cat. #: 24819 **Size:** 1 gallon

Lithium Blue

Lithium Blue is a gentle yet rapid formulation for bluing hematoxylin in only 5 minutes. Lithium Blue is buffered at an alkalinity of pH = 8.0. Our premixed and ready-to-use Lithium Blue provides crisp nuclear detail obtained with Gills, Mayer's and Harris' Hematoxylin stains. For use in both cytology and histology.

Cat. #: 24820 **Size:** 1 gallon

Scott's Bluing Reagent



Gentle bluing reagent formulation for those specimens that may be affected by more harsh agents. Our premixed and ready to use Scott's Bluing Reagent provides rapid bluing and crisp nuclear detail obtained with routine hematoxylin and eosin stains. For use in both cytology and histology.

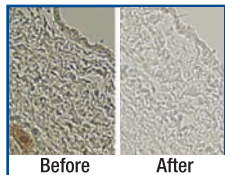
Cat. #: 24605 **Size:** 100ml, 1 gallon

Leishman Stain

For staining bone marrow and blood smears to identify leukocytes, malarial parasites and trypanosomas.

Cat. #: 25001 Size: 25g

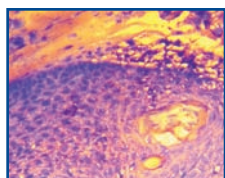
Melanin Bleach Kit



Remove melanin pigment in cells of malignant melanomas and reveal cellular detail! Accumulation of heavy melanin pigment in the cells of malignant melanoma can obscure cellular morphology and can hinder special staining, IHC or histochemical staining. *Kit contains:* 250ml solution A and B.

Cat. #: 24883 Size: 1 kit

Mohs Lab Reagent Starter Kit



All reagents needed to start a complete MOH's lab. From cryotomy, fixation, staining and orientation, to the complete product of a finished slide that can be viewed within minutes. *Kit contains:* PolyFreeze Frozen Mounting Medium, Tissue Marking Dye, Fast Frozen Stain Kit, Flash Dip FNA/ *H. Pylori* Kit, Microscope Slides and Delicate Melanin Bleach Kit.

Cat. #: 25044 Size: 1 kit

Neat Stain Gram Stain Kit



For staining bacteria from cultures or specimens by the differential Gram stain method. Staining characteristics are similar to traditional Wright's and Wright-Giemsa stains. Neat Stain offers the flexibility of a three dip staining sequence in both the stain and counterstain solution. Kit performs 150 tests.

Cat. #: 25036 Size: 1 kit

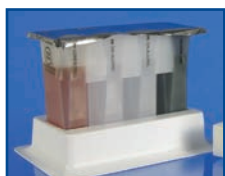
Neat Stain Hematology Stain Kit



Three-step procedure for differentiation of morphological cell types in peripheral blood smears. Also useful in Andrology labs staining microorganisms and spermatozoa. Neat Stain offers the flexibility of a three dip staining sequence in both the stain and counterstain solution. Kit performs 150 tests.

Cat. #: 25034 Size: 1 kit

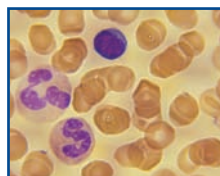
Neat Stain Trichrome Stain Kit



For staining stool specimens. Based upon the Wheatley Trichrome technique which is a rapid staining procedure providing optimal results for routine examination. Simplified method - use of a mordant prior to staining is not necessary. Kit performs 75 tests.

Cat. #: 25035 Size: 1 kit

Wright-Giemsa Stain Solution



Dual purpose stain useful for blood films, parasites and bone marrow aspirates. Prepared from certified dyes. Ready-to-use solution makes the differentiation of human blood cells much easier to identify. Based on a commonly used Azure-Eosin formula.

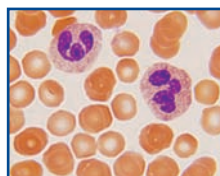
Cat. #: 24985 Size: 1L, 10L

Wright-Giemsa Stain Phosphate Buffer pH 6.8

This Phosphate Buffer yields satisfactory staining results every time when used with Wright-Giemsa stains. The buffer used in the Wright-Giemsa staining protocol needs to be pH 6.8 or results will be unsatisfactory.

Cat. #: 24984 Size: 1L, 4L

Wright Stain Solution



Dual purpose stain used for staining blood smears and bone marrow aspirates. Ready-to-use solution makes the differentiation of human blood cells much easier to identify.

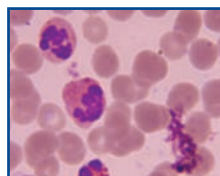
Cat. #: 24986 Size: 1L, 4L, 20L

Wright Stain Phosphate Buffer pH 6.8

This phosphate buffer yields satisfactory staining results every time when used with the Wright staining method. The buffer used in the Wright staining protocol needs to be pH 6.8 or results will be unsatisfactory.

Cat. #: 24989 Size: 1L, 4L

May-Grünwald Stain Solution



Classic hematology stain that produces dense coloration in the staining of peripheral blood smears and bone marrows.

Cat. #: 24981 Size: 1L, 4L

Giemsa Stain (for May-Grünwald)

Giemsa stain (for May-Grünwald) is a classic blood film stain for peripheral blood smears and bone marrow specimens, used to visualize chromosomes, stains fungus histoplasma and identifies mast cells.

Cat. #: 25038 Size: 100ml, 400ml

May-Grünwald Giemsa Phosphate Buffer pH 7.2

For use as a buffer in May-Grünwald, Wright Stain, Wright-Giemsa and Leishman staining procedures.

Cat. #: 25032 Size: 1L, 4L

Polysciences, Inc.

400 Valley Road
Warrington, PA 18976
1 (800) 523-2575 / (215) 343-6484
info@polysciences.com

Polysciences Europe GmbH

Handelsstrasse 3
D-69214 Eppelheim, Germany
+(49) 6221-765767
info@polysciences.de

Polysciences Asia Pacific, Inc.

2F-1, 207 DunHua North Road
Taipei, Taiwan 10595
(886) 2 8712 0600
info@polysciences.tw

We offer a complete line of Biosciences products,
to learn more visit www.polysciences.com/biosciences

