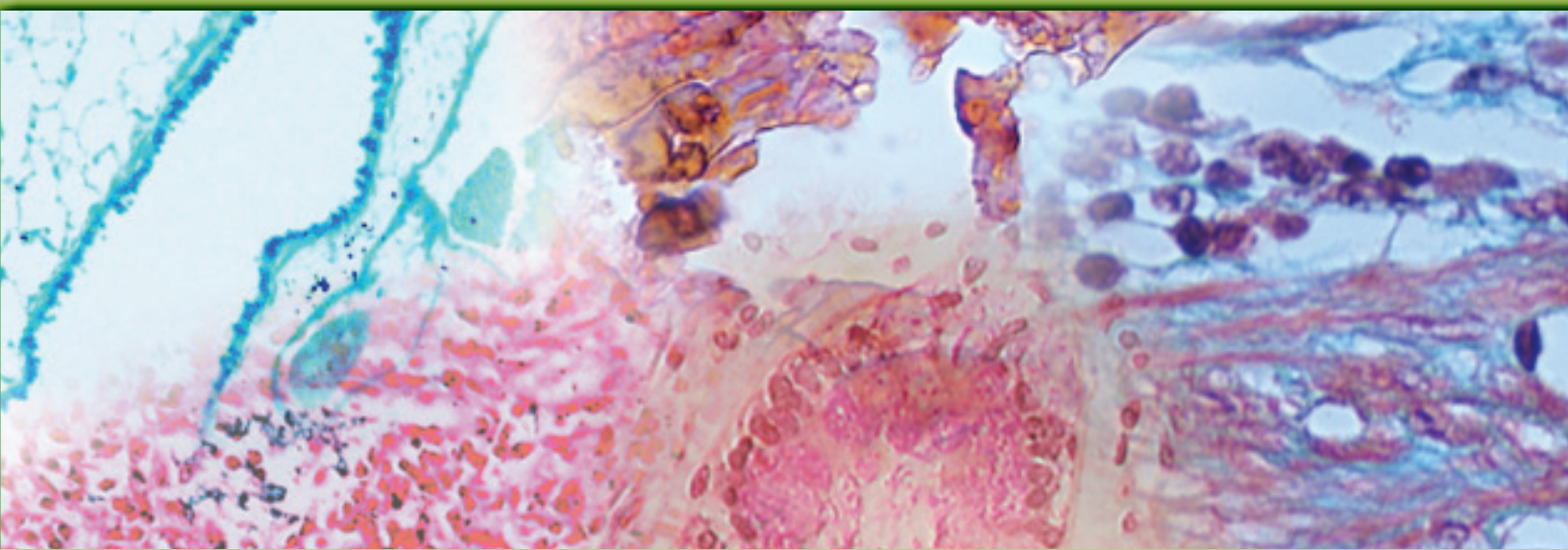
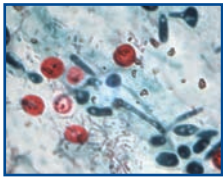


***Stain*RITE™**
Ready-to-Use Stains

Special Stains Product Guide



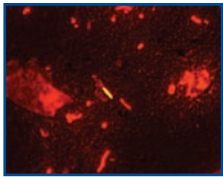
AFB Kinyoun Kit (Cold Method)



Method of staining acid-fast microorganisms, specifically mycobacterium. Similar to Ziehl-Neelson stain without heating. Kinyoun carbol-fuchsin has a greater concentration of phenol and basic fuchsin and does not require heating in order to stain properly. Acid-fast organisms stain red, non acid-fast organisms stain blue.

Cat. #: 24670 Size: 1 kit

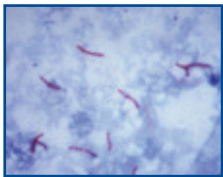
AFB Rhodamine-Auramine Kit (Fluorescent)



Identification of Mycobacteria with rhodamine-auramine is due to the affinity of the mycolic acid in the cell walls for the fluorochromes. These dyes will bind to the Mycobacteria, that appear bright yellow or orange against a greenish background. All acid fast organisms will be stained by rhodamine-auramine, including the sporozoan parasites. Convenient method of confirming and differentiating morphology of positive slides with the traditional stains.

Cat. #: 24666 Size: 1 kit

AFB Ziehl Neelson Kit (Hot Method)



Used to identify acid-fast organisms, mainly Mycobacteria. Helpful in diagnosing *Mycobacterium tuberculosis* since its lipid rich cell wall makes it resistant to Gram stain. Also stains other bacteria like *Nocardia*. Acid-fast bacilli stain bright red, non-acid fast organisms stain blue or green.

Cat. #: 24669 Size: 1 kit

Amyloid Stain Kit - Congo Red

Complete kit to aid in the staining of tissue for Amyloidosis. Amyloid Stain Kit used in the detection of amyloid FFPE as well as frozen tissue sections cut at 10 microns. The amyloid stains red and the nuclei stains blue. Control tissue is Alzheimer's or other known amyloidosis.

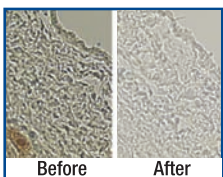
Cat. #: 24614 Size: 1 kit

Biebrich Scarlet - Acid Fuchsin Solution

For use in Masson Trichrome stain procedure. Our ready-to-use format eliminates the exposure to potentially irritating powdered dyes. (1% Acetic Acid, .9% Biebrich Scarlet, 0.1% Fuchsin)

Cat. #: 24602 Size: 1 kit

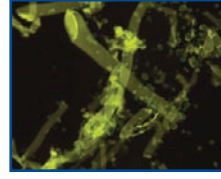
Delicate Melanin Bleach Kit for Special Stains and IHC



Removing melanin from tissue sections allows for positive staining to be interpreted correctly especially if DAB is used when performing immunohistochemistry. Saves time, by removing melanin pigment prior to incubation with primary antibody. Also used in IHC.

Cat. #: 24909 Size: 1 kit

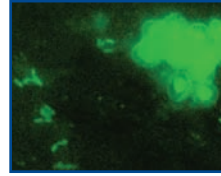
Fungi-Fluor® Kit (for Fungal Detection)



Offers a quick fluorescent stain/counterstain procedure for various fungal organisms. The kit can be used to screen a variety of specimen types from sputum to skin scrapings for fungal detection. Also available in European version.

Cat. #: 17442 Size: 1 kit

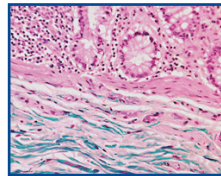
Fungi-Fluor® Pneumocystis Kit



Offers a fast, fluorescent staining procedure for *Pneumocystis carinii* in bronchial specimens. Advantages include: Slides are permanent and can be reactivated if fluorescence dims. Minimal prep and clean-up, stain for 3 minutes and read. Specimen Types: Bronchoalveolar lavage (BAL), Bronchial brush or wash, Touch prep of fresh tissue, Paraffin section and frozen sections. Kit performs 100 tests. Also available in European version.

Cat. #: 22363 Size: 1 kit

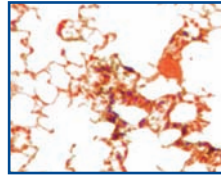
Gomori's Trichrome Stain Kit



For visualization of collagenous connective tissue fibers in tissue sections, primarily for distinguishing collagen from muscle tissue.

Cat. #: 24205 Size: 1 kit

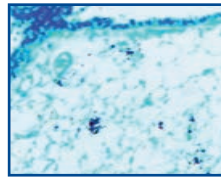
Gram's Stain Kit with Iodine



Used to stain microorganisms from cultures or specimens by the differential Gram method. Separates bacterial species into two large groups, those that retain the primary dye (gram-positive) and those that lose the primary dye and take the color of the secondary dye (gram-negative). The mechanism of gram stain is based on the distinctive chemistry and physical properties of the cell wall.

Cat. #: 24668 Size: 1 kit

Grocott Methenamine Silver Stain (GMS)



For the visualization of fungi and *Pneumocystis jiroveci* in tissue sections. Fungi and *P. jiroveci* are stained black, while other tissue elements stain green. Can be used on tissue, aspirates or smears. The alkaline hexamine-silver solution allows silver ions, upon reduction to appear dark or black.

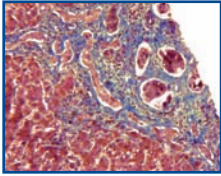
Cat. #: 25087 Size: 1 kit

Jones PAS-M Stain Kit

New and improved Jones PAS-M technique that utilizes an enhancer to accelerate the methenamine silver reaction with the glomerular basement membranes, while reducing the time to achieve results better than the original Jones PAS-M and a more stabilized silver solution. Used in kidney biopsies, Jones PAS-M may also be used for plastic sections for glomerular and tubular basement membranes.

Cat. #: 25091 Size: 100ml, 500ml

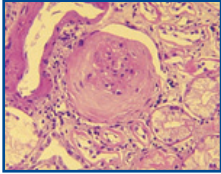
Masson's Trichrome Stain Kit



This method is used for the detection of collagen fibers in tissues such as skin, heart, etc. on formalin-fixed, paraffin-embedded sections and may be used for frozen sections as well. Collagen fibers stained blue and nuclei stained black.

Cat. #: 25088 **Size:** 100ml, 500ml

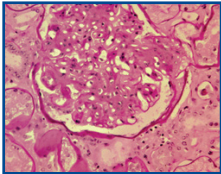
Multiple Stain Solution (formerly known as Paragon Stain)



One Step procedure with H & E quality staining. Used in Tzanck preparations of herpetic lesions and to differentiate acidophilic and basophilic structures. Stain can be directly applied to frozen sections, epoxy or JB-4 embedded sections and utilized as a general cytoplasmic and nuclear stain. MSS also differentiates various cytologic processes, including basal cell & squamous cell carcinomas, malignant melanoma, B-cell lymphoma, acute myelomonocytic leukemia and metastatic breast cancer. Replacement for Paragon Multiple Stain (PMS).

Cat. #: 08824 **Size:** 50ml, 100ml

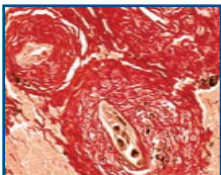
Periodic Acid Schiff's (PAS) Stain Kit



Used to demonstrate polysaccharides, neutral mucosubstances and basement membranes primarily in tissue. The demonstration of glycogen is best represented by a section of liver with a digestion step used as a negative control in the staining. Kit is supplied with Harris Hematoxylin Acidified as the counterstain.

Cat. #: 24200 **Size:** 1 kit

Picrosirius Red Stain Kit

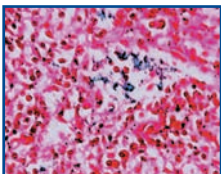


Binds specifically to collagen fibrils of varying diameter used to distinguish collagen Type I from Type III. Picrosirius Red Stain will quantify the amount of collagen in a given area of myocardial tissue. Picrosirius red-hematoxylin is recommended for examination of normal or pathologic dental specimens. Available in 250ml and 500ml kits.

Cat. #: 24901 **Size:** 250ml, 500ml

Prussian Blue Iron Stain Kit

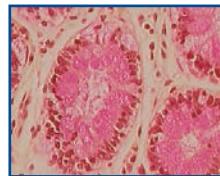
Reaction for the Demonstration of Iron



Histochemical reaction used to demonstrate ferric iron and ferritin. This is not a true staining technique. Protein is split off by the hydrochloric acid, allowing the potassium ferrocyanide to combine with the ferric iron. This forms the ferric ferrocyanide or Prussian Blue. 10% NBF or alcohol can be used. Deparaffinize slides through xylene or substitute to remove paraffin from the section and descending grades of alcohol to water just prior to staining.

Cat. #: 24199 **Size:** 1 kit

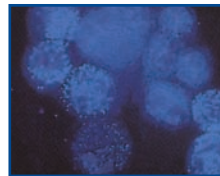
Rapid Mucin Stain Kit



Secretions of mucins are produced in several areas including epithelial and connective tissue. Inflammation can cause secretion of mucin as well as some types of intestinal carcinomas. Can quickly determine the presence of mucin and assist in the direction of other special stains or immunohistochemistry to determine the origin of the mucin producing cells.

Cat. #: 24208 **Size:** 1 kit

TB Fluorostain Kit



Fluorochrome staining of mycobacteria in an acid fast smear offers several advantages over traditional carbol-fuchsin methods. Fluorescent mycobacteria stand out brightly on darkened backgrounds. Perform staining in less than 12 minutes. Uses less Auramine O and Rhodamine B, reducing costs and hazards. Kit performs 100 test.

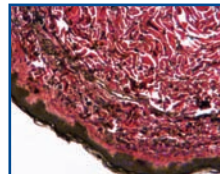
Cat. #: 22422 **Size:** 1 kit

Terry's Polychrome Methylene Blue 2% Aqueous

Stat staining method for unfixed and fixed tissue. Stains nuclei more strongly than cell cytoplasm. Excellent dye for nuclear and nucleolar details. Can be used to demonstrate erythrocyte alterations/inclusions and some erythrocyte parasites, as well as to visualize reticulocytes. Methylene blue is different from Romanowsky stains.

Cat. #: 09978 **Size:** 470ml

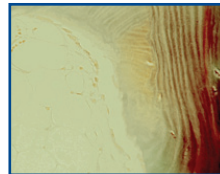
Verhoeff Van Gieson Elastin Stain Kit



Useful in demonstrating atrophy of elastic tissue in cases of emphysema, thinning and loss of elastic fibers in arteriosclerosis and other vascular diseases. With aging, changes such as splitting and fragmentation occur, these changes are most obvious in the skin which becomes wrinkled and rather loose-fitting.

Cat. #: 25089 **Size:** 1 kit

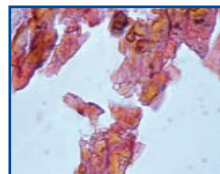
Villanueva Osteochrome Bone Stain



Useful for staining fresh, fixed, unembedded or plastic-embedded sections of bone. Villanueva Osteochrome Bone Stain gives uniform and reproducible results. Useful in studying biopsy or postmortem tissue.

Cat. #: 16280 **Size:** 450ml

Von Kossa Method for Calcium Kit



Demonstrates only calcium phosphate and calcium carbonate salts. Used as a bone stain to indicate osteomalacia or in other paraffin embedded tissues to stain calcium deposits seen in metabolic diseases, Paget's disease, renal osteodystrophy & hyperparathyroidism, necrotic areas associated with TB, infarction (Gandy Gamma bodies), atheroma in blood vessels and Malakoplakia in the bladder (Michaelis-Gutman bodies). Each kit will stain 500 slides.

Cat. #: 24633 **Size:** 1 kit

Polysciences, Inc.

400 Valley Road
Warrington, PA 18976
1 (800) 523-2575 / (215) 343-6484
info@polysciences.com

Polysciences Europe GmbH

Handelsstrasse 3
D-69214 Eppelheim, Germany
+(49) 6221-765767
info@polysciences.de

Polysciences Asia Pacific, Inc.

2F-1, 207 DunHua North Road
Taipei, Taiwan 10595
(886) 2 8712 0600
info@polysciences.tw

We offer a complete line of Biosciences products,
to learn more visit www.polysciences.com/biosciences

