

Flow Check™ Ruby Red Fluorescent Microspheres

Catalog Number: 24288

DESCRIPTION

Flow Check™ Ruby Red Fluorescent Microspheres are 6µm narrow distribution polystyrene particles that can be used for flow cytometry applications where fluorescence emission in the range of 600-710nm is needed.

- Excitation maximum: 475nm
- Emission maximum: 663nm
- Suitable for 488nm and 633nm excitation, detection in FL3
- Use to: Check and adjust instrument settings
Check instrument sensitivity
Monitor instrument performance

USE

Ruby Red fluorescent microspheres are supplied as a 5ml suspension at a concentration of 5 x 10⁶ microspheres/ml in convenient dropper bottles. To use, shake bottle to fully resuspend microspheres and dispense one drop of suspension into 1-3ml of sheath fluid. Fluorescent signal is detected in FL3 or FL4. Please see examples below of filter arrangements and flow cytometry outputs.

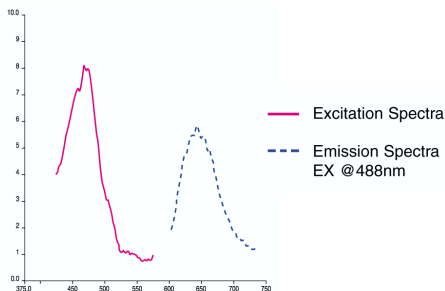


Figure 1: Excitation and emission spectra of Flow Check™ Ruby Red Fluorescent Microspheres in water. Absorption spans approximately 380nm to 520nm. Emission was recorded at 488nm excitation.

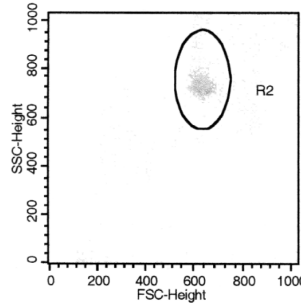


Figure 2: Forward vs. Side Scatter Plot of Ruby Red Microspheres.

Figure 3A

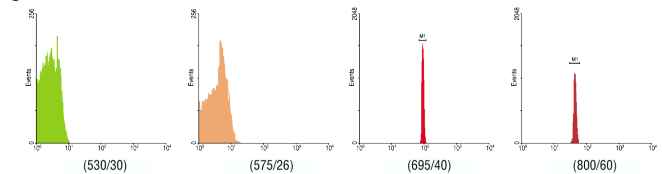
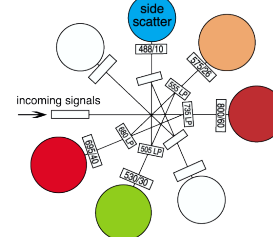


Figure 3B



Figures 3*A & 3B: Flow Cytometry analysis of Flow Check™ Ruby Red Fluorescent Microspheres excited at 488nm. Figure 3A depicts the light path and filter arrangement used in the analysis. Figure 3B shows the fluorescence output in the four detectors.

Figure 4A

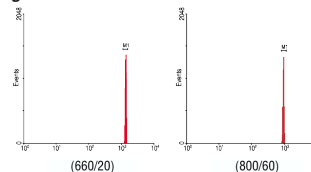
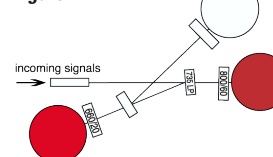


Figure 4B



Figures 4*A & 4B: Flow Cytometry analysis of Flow Check™ Ruby Red Fluorescent Microspheres excited at 633nm. Figure 4A depicts the light path and filter arrangement used in the analysis. Figure 4B shows the fluorescence output in the two detectors.

Figure 5A

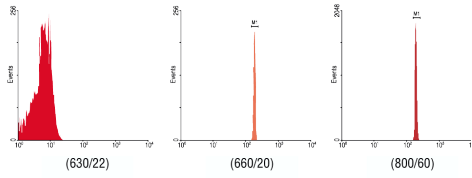
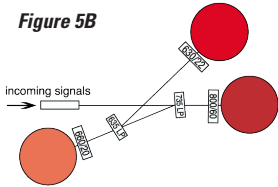


Figure 5B



Figures 5*A & 5B: Flow Cytometry analysis of Flow Check™ Ruby Red Fluorescent Microspheres excited at 594nm. Figure 5A depicts the light path and filter arrangement used in the analysis. Figure 5B shows the fluorescence output in the two detectors.

* Data kindly provided by Bill Telford, NCI-NIH

STORAGE

Store Ruby Red microspheres at 4°C.

These products are for research use only and are not intended for use in humans or for *in vitro* diagnostic use.

ORDERING INFORMATION

Cat. #	Description	Size
24288-5	Flow Check™ Ruby Red Fluorescent Microspheres	5ml

TO ORDER

In The U.S. Call: 1(800) 523-2575 • (215) 343-6484
 In The U.S. Fax: 1(800) 343-3291 • (215) 343-0214
 In Germany Call: +(49) 06201-845200
 In Germany Fax: +(49) 06201-8452020
 In Asia Call: (886) 2 8712 0600
 In Asia Fax: (886) 2 8712 2677

Order online anytime at www.polysciences.com

Should any of our materials fail to perform to our specifications, we will be pleased to provide replacements or return the purchase price. We solicit your inquiries concerning all needs for life sciences work. The information given in this bulletin is to the best of our knowledge accurate, but no warranty is expressed or implied. It is the user's responsibility to determine the suitability for their own use of the products described herein, and since conditions of use are beyond our control, we disclaim all liability with respect to the use of any material supplied by us. Nothing contained herein shall be construed as a recommendation to use any product or to practice any process in violation of any law or any government regulation.