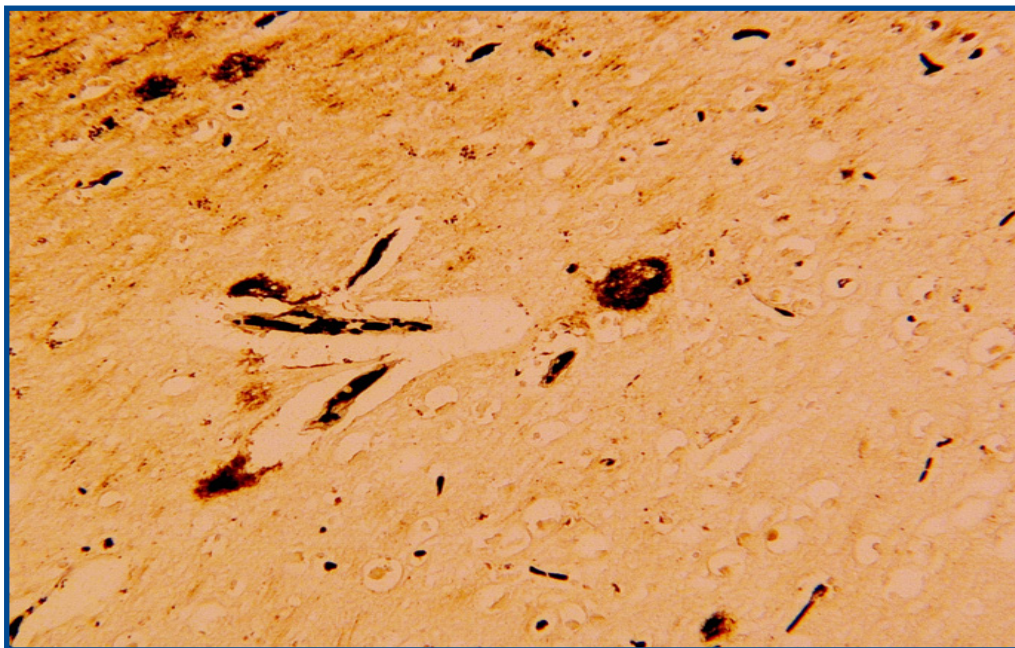


Bielschowsky Stain



The Bielschowsky Stain is a very useful method in detecting the twist and clumping of neurons in the brain, otherwise known as, neurofibrillary tangles and senile plaques, which are signs of the Alzheimer's disease. The Bielschowsky Stain, along with other diagnostic test, can assist scientist and researchers in the mission for finding a cure for this disease of memory loss. Used on FFPE sections cut at 8-10 microns.

RESULTS

Neurofibrillary tangles and senile plaques black
Axons black
Nerve fibers brown to black
Background yellow to brown



Kit Contains: 10% Silver Nitrate Solution; Ammonium Hydroxide, concentrate; Developer Stock Solution; 1% Ammonium Hydroxide Solution; 5% Sodium Thiosulfate

Cat. #25994-250 Size: 250mL Kit

Cat. #25994-500 Size: 500mL Kit