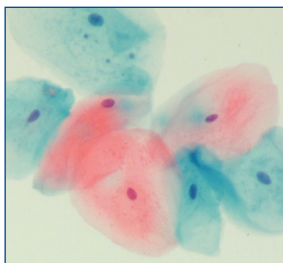


Hematoxylin

Our Hematoxylin products offer you the highest quality for routine staining. Strict quality control for all Gold Standard Series Routine Stains ensures lot-to-lot consistency.

Gill's Hematoxylin #1 for Cytology

Gill's #1 is ideal for routine cytology staining. This single strength formulation optimally stains gynecological and non-gynecological specimens.

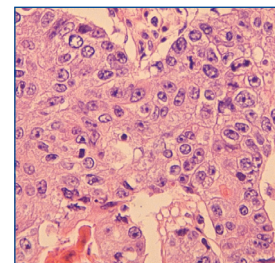


Cheek cells, Gill's #1, 20x

Cat. #: 24242 **Kit Sizes:** 500/1000ml

Harris Hematoxylin, Acidified (mercury-free)

Gold Standard Harris Hematoxylin for routine histology and cytology. Similar results can be achieved to those of Gill's Hematoxylin #1, #2, and #3 formulations by varying staining times.

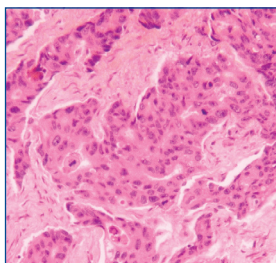


Colon carcinoma, Harris, 20x

Cat. #: 24245 **Kit Sizes:** 500/1000ml

Gill's Hematoxylin #2, double strength for Histology & Cytology

Gill's #2 should be used when a stronger or darker nuclear stain is required for cytology samples; also recommended for immunohistochemical counterstaining.

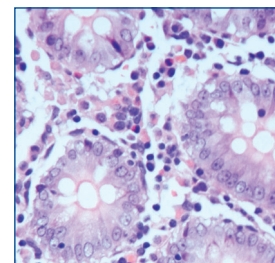


Breast, Gill's #2, 10x

Cat. #: 24243 **Kit Sizes:** 500/1000ml

Mayers Hematoxylin

For use in both cytology and histology. General purpose nuclear stain, used with hematoxylin and eosin staining. Used also as a counterstain for immunohistochemistry procedures.

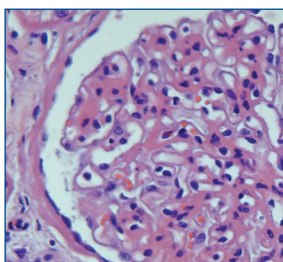


Colon, Mayers, 20x

Cat. #: 24821 **Kit Sizes:** 500ml/1 liter

Gill's Hematoxylin #3, triple strength for Histology

Gill's #3 is the formulation of choice for routine histological staining when a darker nuclear stain is desired.



Kidney, Gill's #3, 20x

Cat. #: 24244 **Kit Sizes:** 500/1000ml