

BioMag[®] SelectaPure anti-Human CD56

Catalog Number: 85056

DESCRIPTION

The CD56 antigen isoform is 140 kDa and moderately expressed on a subpopulation of peripheral blood large granular lymphocytes, all cells with natural killer (NK) activity, and by subsets of T lymphocytes. CD56 antibodies do not react with granulocytes, monocytes, or B cells.

The CD56 antigen is an isoform of the Neural Cell Adhesion Molecule (N-CAM). The N-CAM isoforms have molecular weights ranging from 135-220 kDa and have post-translational modifications to the polypeptide, including N- and O-glycosylations, acylation, sulphation, and phosphorylation.

BioMag[®] SelectaPure anti-Human CD56 particles recognize N-CAM present on natural killer cells, neuroectodermal cells, and some T cell lines.

BioMag[®] SelectaPure anti-Human CD56 is a suspension of magnetic particles approximately 1.5 μ m in size. The suspension is supplied in a phosphate buffered saline (pH 7.5) containing EDTA, 1.0% BSA, and 0.1% sodium azide.

CHARACTERISTICS

Mean Diameter: ~1.5 μ m
Particle Concentration: 4mg/ml
Particle Count: 1 x 10⁸ BioMag[®] particles per mg

PROCEDURE

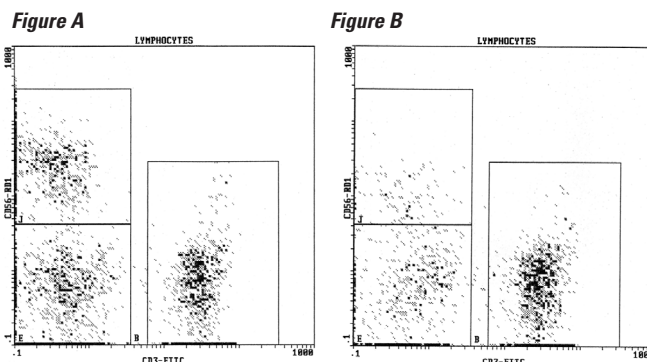
Researchers are advised to optimize the use of particles in any application.

Depending on antigen availability and the size of the target cell population, cell sorting applications may require up to 50-60 magnetic particles per cell. Magnetic particles and cells should be incubated at room temperature for 30-60 minutes in media containing 5-10% protein (to reduce non-specific binding) for successful separation. Gentle end-over-end mixing or rocking during incubation is required for optimal results. (*Note:* Increasing the incubation time beyond one hour may be necessary to achieve the desired depletion.)

Some applications require the detachment of BioMag[®] antibody particles from cells after separation. One approach would involve culturing cells after positive selection. Cultures can be maintained for about 48 hours during which magnetic particles fall away from cells due to cell surface changeover. The magnetic particles are then easily removed via a magnetic separation. Another approach is the use of a protease, such as chymopapain, to break the antigen-antibody bond and remove the particles

magnetically. Depending upon the application, it may not be necessary to remove the cells from the BioMag[®] particles. BioMag[®] particles are only 1-2 μ m in size and have been successfully used in FACS equipment. They will not jam the machine and are distinguishable from cells. Alternatively, negative selection approaches can be very effective in producing specific cell populations.

Cell sorting results using BioMag[®] SelectaPure anti-Human CD56 leukocyte particles for positive selection. Typically, whole blood or purified leukocytes and particles are incubated for 30 minutes at room temperature and then magnetically separated. The supernatant is collected, incubated with the appropriate two-color antibody cocktail, and then analyzed by flow cytometry. Figure A depicts the cell population prior to positive selection. Figure B depicts the cell population after positive selection. The particle to cell ratios reported above are based on experiments where cells were exposed to the particles once.



General Recommendation*:

Concentration#	4.0 x 10 ⁸ particles/ml
Volume Used	0.01ml
# Particles	4.00 x 10 ⁷ per test
# Target Cells	4.00 x 10 ⁵ per test
Particle:Target Cell Ratio	100:1
% Depletion	76.7%

* These values should be used as a starting point in optimizing experimental protocols. Due to differences in the distribution of cell types in samples and other variables, the researcher is strongly encouraged to determine the optimal particle to cell ratios for their experiments.

STORAGE AND SAFETY

Storage Store at 4°C. Freezing, drying, or centrifuging BioMag® may result in irreversible aggregation and loss of binding activity. Washing BioMag® SelectaPure anti-Human CD56 particles in sterile media to remove preservative prior to use is recommended. Using a magnetic separation unit for washing instead of centrifugation is also strongly recommended.

Safety This particle suspension contains sodium azide. Sodium azide may react with lead and copper plumbing to form explosive metal azides. Upon disposal of material, flush with a large volume of water to prevent azide accumulation. Please consult the Safety Data Sheet for more information.

These products are for research use only and are not intended for use in humans or for *in vitro* diagnostic use.

ORDERING INFORMATION

Cat. #	Description	Size
85056-5	BioMag® SelectaPure anti-Human CD56	5ml

TO ORDER

In The U.S. Call: 1(800) 523-2575 • (215) 343-6484
 In The U.S. Fax: 1(800) 343-3291 • (215) 343-0214

 In Germany Call: +(49) 06201-845200
 In Germany Fax: +(49) 06201-8452020

 In Asia Call: (886) 2 8712 0600
 In Asia Fax: (886) 2 8712 2677

Order online anytime at www.polysciences.com

Should any of our materials fail to perform to our specifications, we will be pleased to provide replacements or return the purchase price. We solicit your inquiries concerning all needs for life sciences work. The information given in this bulletin is to the best of our knowledge accurate, but no warranty is expressed or implied. It is the user's responsibility to determine the suitability for their own use of the products described herein, and since conditions of use are beyond our control, we disclaim all liability with respect to the use of any material supplied by us. Nothing contained herein shall be construed as a recommendation to use any product or to practice any process in violation of any law or any government regulation.